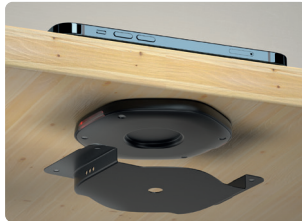


WLC H30

Charging station for wireless charging, concealed mounting

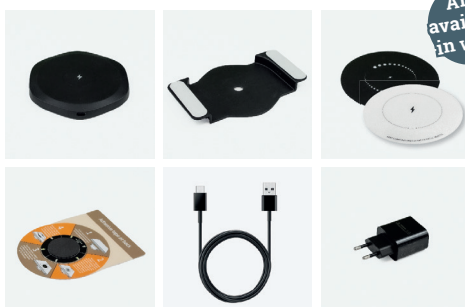
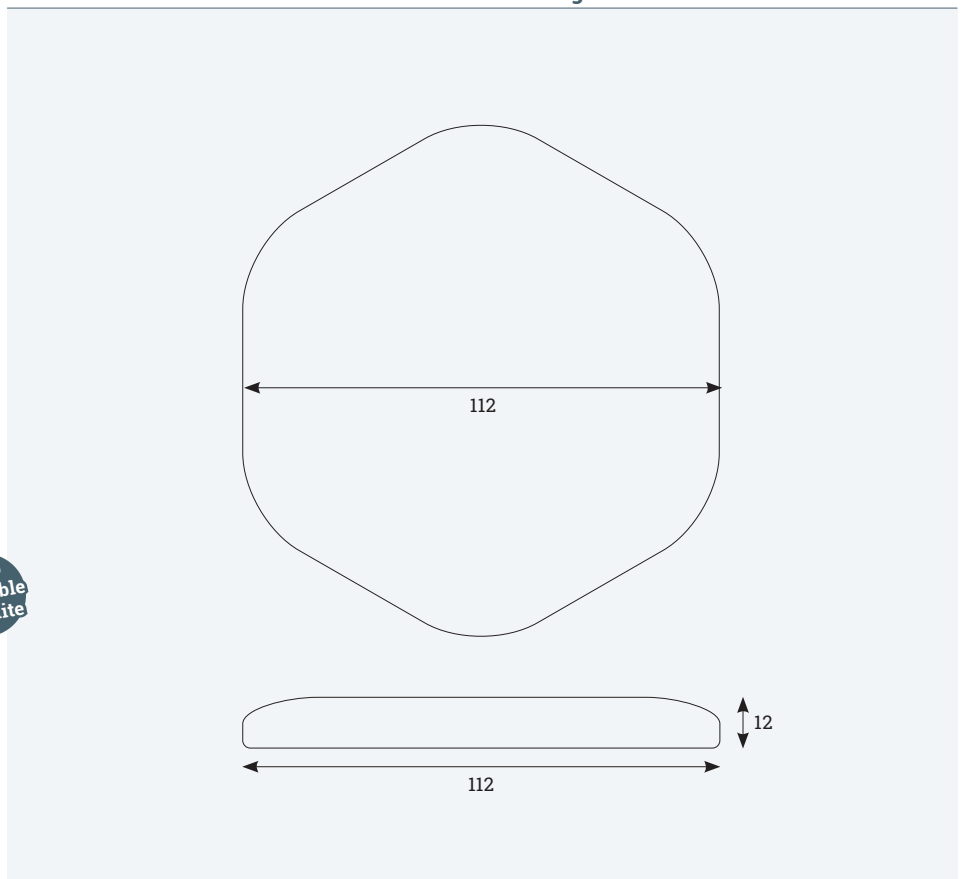
- ✔ Inductive charging station for mobile phones
- ✔ Charging power: 10 W
- ✔ Easy installation under the tabletop, no drilling required
- ✔ Includes USB cable and QC 3.0 fast-charging adapter



Details

Charging distance	10-30 mm
Cable length	1,5 m
Connection cable	(USB-C<->USB-A)
Wireless charging	10 W

Technical drawings



Also available in white

Article	Description	Wireless charging	Colour	Item No.
WLC H30 Set	Wireless charger, 10-30 mm board thickness, 10 W, Ø122 mm, Quick Charge 3.0 adapter, housing, induction smart sticker, alignment tool	✔ (10 W)	Black	205 130002
WLC H30 sticker	Smart coil sticker for charging amplification		White	205 131682

WLC Point 15

Ø80 mm built-in charging station for wireless charging

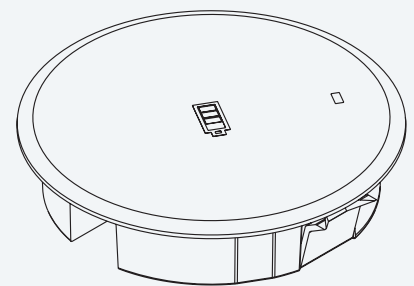
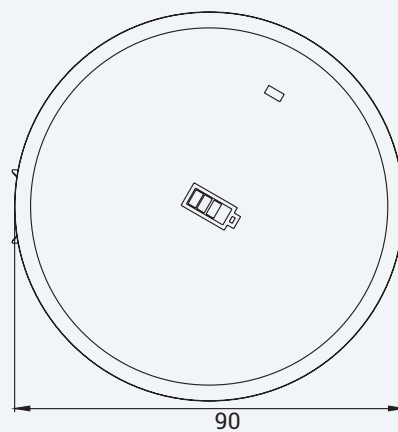
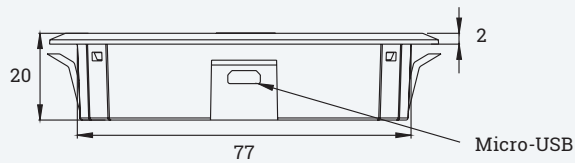
- ✓ Built-in inductive charging station for mobile phones
- ✓ Charging power: 15 W
- ✓ For installation in furniture
- ✓ Includes USB cable and QC 3.0 fast-charging adapter



Details

Drill dimension	Ø80 mm
Charging distance	4-6 mm
Cable length	1,5 m
Connection cable	(USB-A<->Micro-USB)
Wireless charging	15 W
Cover plate	Ø90x2 mm

Technical drawings



Article	Description	Drill dimension	Wireless charging	Colour	Item No.
WLC Point 15	Charging station for wireless charging, charging light, incl. USB-charger and USB power cable	Ø80 mm	✓ (15 W)	Black	205 107931