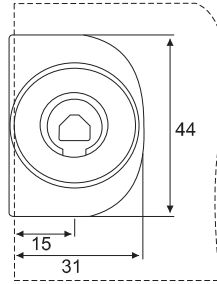
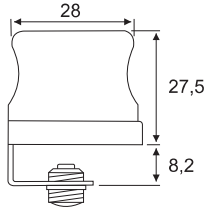


# Glastürschlösser

## Glass door locks





**Zum Aufschieben auf Einzelglastüren der Stärke 4-6mm komplett mit Türbefestigung aus gehärtetem Stahl und 2 Spezialschrauben mit Nyloneinsatz**  
To slide on single glass doors of 4-6mm thickness, complete with door bracket made of hardened steel and 2 special screws with nylon insert

**Material: Zamak / Zinc alloy**

**10**

**Einzeltür rechts / Single door right**

**Oberfläche / Finish**

**Art. No.**

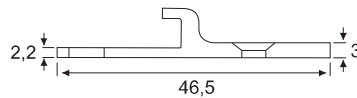
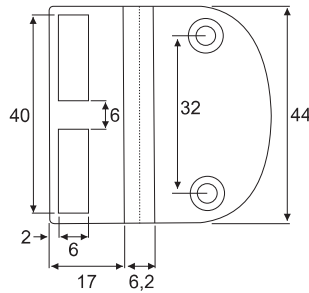
**Vernickelt poliert /  
Nickel plated polished**

**104 101036**



**Keine Glasbohrung erforderlich**  
No drilling of glass necessary

\*Scharniere Seite 1,59  
Hinges on page 1,59



**Schließblech und Anschlag für einliegende Glastüren mit integriertem Türdämpfer**  
Striking plate and stop plate for glass doors with integrated door bumper

**Material: Zamak / Zinc alloy**

**20 / 200**

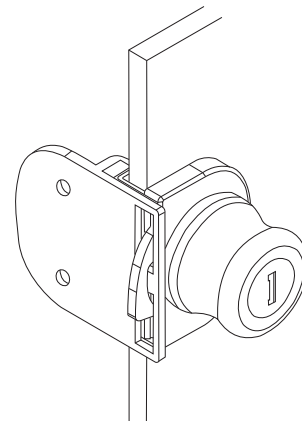
**Oberfläche / Finish**

**Art. No.**

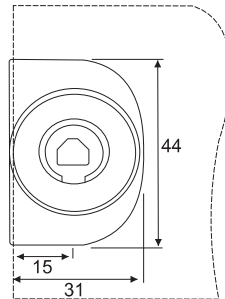
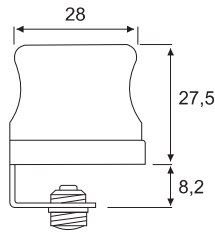
**Vernickelt poliert /  
Nickel plated polished**

**104 101183**

**Ø 3,5mm**



Maßangaben unverbindlich / Dimensions not binding



**Zum Aufschieben auf Doppelglastüren der Stärke 4-6mm, komplett mit Türbefestigung aus gehärtetem Stahl und 2 Spezialschrauben mit Nyloneinsatz**  
To slide on double glass doors of 4-6mm thickness, complete with door bracket made out of hardened steel and with 2 special screws with nylon insert

**Material: Zamak / Zinc alloy**

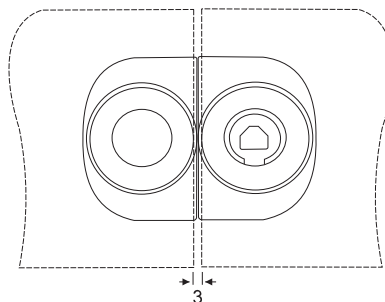
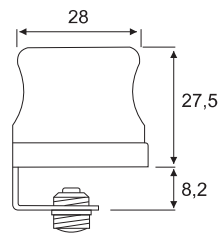
10

**Oberfläche / Finish**

**Art. No.**

**Vernickelt poliert /  
Nickel plated polished**

**104 101036**



**Gegenstück für Doppelglastüren, komplett mit Türbefestigung aus gehärtetem Stahl und 2 Spezialschrauben mit Nyloneinsatz**  
Counter piece for double glass doors, complete with door bracket made out of hardened steel and with 2 special screws with nylon insert

**Material: Zamak / Zinc alloy**

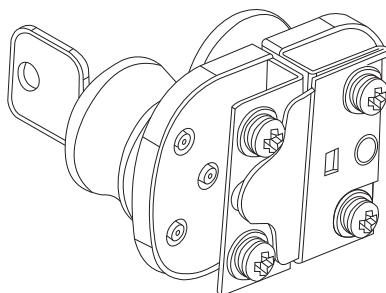
10

**Oberfläche / Finish**

**Art. No.**

**Vernickelt poliert /  
Nickel plated polished**

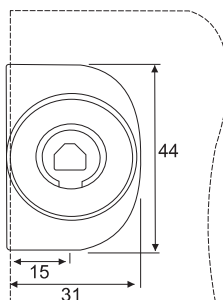
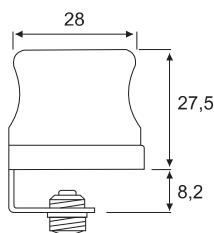
**104 100511**



**Keine Glasbohrung erforderlich**  
No drilling of glass necessary



Maßangaben unverbindlich / Dimensions not binding



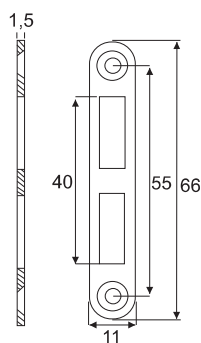
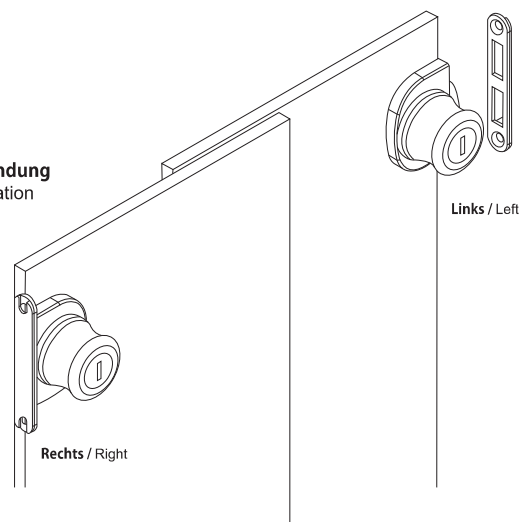
**Glastürschloss für den Einsatz in einliegenden Schiebetüren der Stärke 4-6mm**  
Glass door lock to be installed on inlaid sliding doors of thickness 4-6mm

**10**

**Rechts und Links / Right and Left**

<b>Oberfläche / Finish</b>	<b>Art. No.</b>
<b>Vernickelt poliert / Nickel plated polished</b>	<b>104 101036</b>

**Anwendung**  
Installation

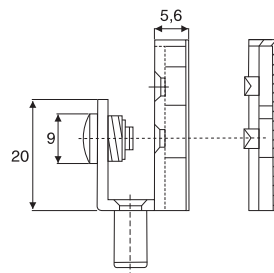
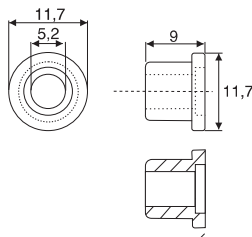
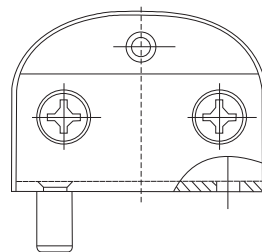
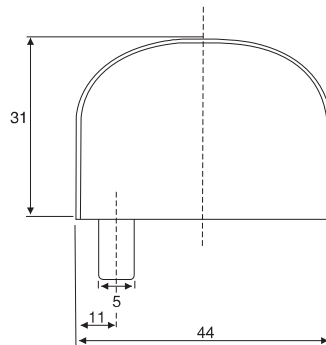


**Schließblech**  
Striking plate

**Material: Stahl / Steel**

**60**

<b>Oberfläche / Finish</b>	<b>Art. No.</b>
<b>Vernickelt / Nickel plated</b>	<b>104 102261</b>



**Glastürscharnier für einliegende Türen von 4-6mm Stärke /**  
Glass door hinge for inlaid doors of 4-6mm thickness

**Öffnungswinkel maximal 110°**  
Opening max. 110°

**Türgröße maximal: Höhe 1000mm, Breite 500mm /** Maximum door size: Height 1000mm, width 500mm

**Material: Zamak / Material: Zinc alloy**

**20**

**Installation links oben bzw. rechts unten /** Installation top left or bottom right

Oberfläche / Finish	Art. No.
---------------------	----------

Vernickelt poliert / Nickel plated polished	<b>104 101512</b>
---	-------------------

Edelstahl Optik / Stainless steel finish	<b>104 101715</b>
--	-------------------

**Inkl. Zubehör: Führungsbuchse**  
Incl. accessories: guide bushing

**Installation rechts oben bzw. links unten /** Installation top right or bottom left

Oberfläche / Finish	Art. No.
---------------------	----------

Vernickelt poliert / Nickel plated polished	<b>104 102450</b>
---	-------------------

Edelstahl Optik / Stainless steel finish	<b>104 101155</b>
--	-------------------

**Inkl. Zubehör: Führungsbuchse**  
Incl. accessories: guide bushing



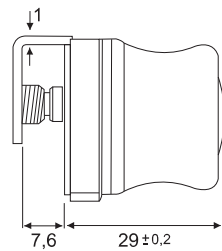
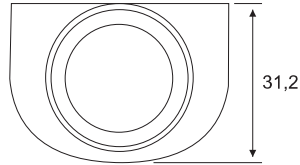
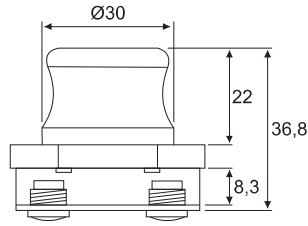
**Keine Glasbohrung erforderlich**  
No drilling of glass necessary



**Rechts und links verwendbar**  
Right and left applicable



**Glastürgriffe können in jeder beliebigen Höhe an den Glastüren angebracht werden.**  
Glass door handles can be attached to the glass door in any position.



**Zum Aufschieben auf Glastüren der Stärke 4-6mm, komplett mit Türbefestigung aus gehärtetem Stahl und 2 Spezialschrauben mit Nyloneinsatz**  
To slide on glass doors of 4-6mm thickness, complete with door bracket made of hardened steel and with 2 special screws with nylon insert

**Material: Zamak / Zinc alloy**

**10**

**Oberfläche / Finish**

**Art. No.**

**Vernickelt poliert /  
Nickel plated polished**

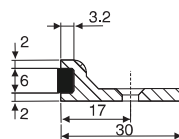
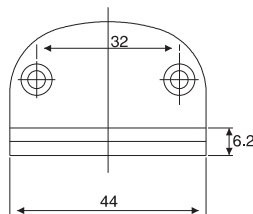
**104 100980**



**Keine Glasbohrung erforderlich**  
No drilling of glass necessary



  $\varnothing 3,5\text{mm}$



**Anschlagplatte für Glastüren, mit Gummidämpfung / Stop plate for glass doors, with rubberized door bumper**

**Material: Zamak / Zinc alloy**

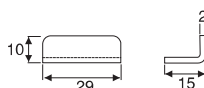
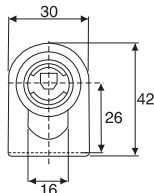
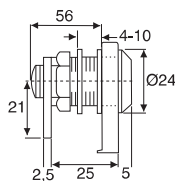
**20 / 200**

**Oberfläche / Finish**

**Art. No.**

**Vernickelt poliert /  
Nickel plated polished**

**104 101743**



**Glastür-Hebelschloss für Glasstärke 4-10mm**  
Glass door lever lock for glass thickness 4-10mm

**Schließweg / Locking travel: 90°**

**Material: Zamak / Zinc alloy**

**20**

**Art. No.**

**Vernickelt poliert / Nickel plated polished** **104 101386**

**Edelstahl Optik / Stainless steel finish** **104 101561**

**Zubehör / Accessories:**

**1x Riegel 21mm / Lever 21mm**

**1x Fixierschraube / Fixing screw**

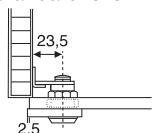
**1x Schließblech 29x10mm**

Striking plate 29x10mm

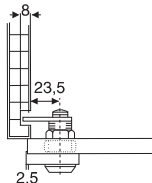
**1x Klemmplatte und -rosette**

Fixing plate and rosette

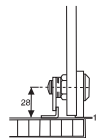
**Horizontaler Einbau**  
Horizontal installation  
**Standard Riegel**  
Standard lever



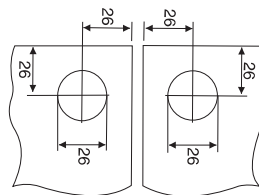
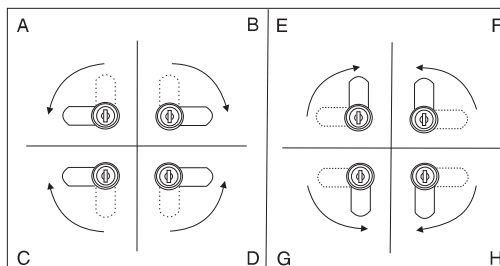
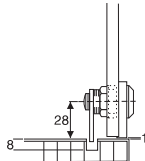
**Mit Riegel 30mm**  
With lever 30mm



**Vertikaler Einbau**  
Vertical installation  
**Standard Riegel**  
Standard lever



**Mit Riegel 30mm**  
With lever 30mm



**Gegenstück zum Glastür-Hebelschloss, zweiteilig**  
Counter piece for glass door lever lock, two parts

**Material: Zamak / Zinc alloy**

**20**

**Ausführung / Finish** **Art. No.**

**Vernickelt poliert / Nickel plated polished** **104 101281**

**Edelstahl Optik\* / Stainless steel finish\*** **104 100476**

**\* Kein Lagerartikel. Auf Anfrage lieferbar**

**\* No stock item. Available upon request.**

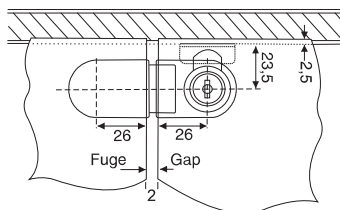
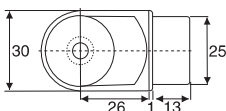
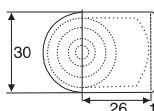
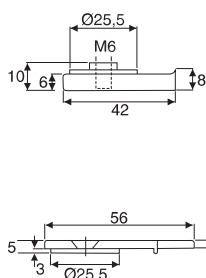
**Zubehör / Accessories:**

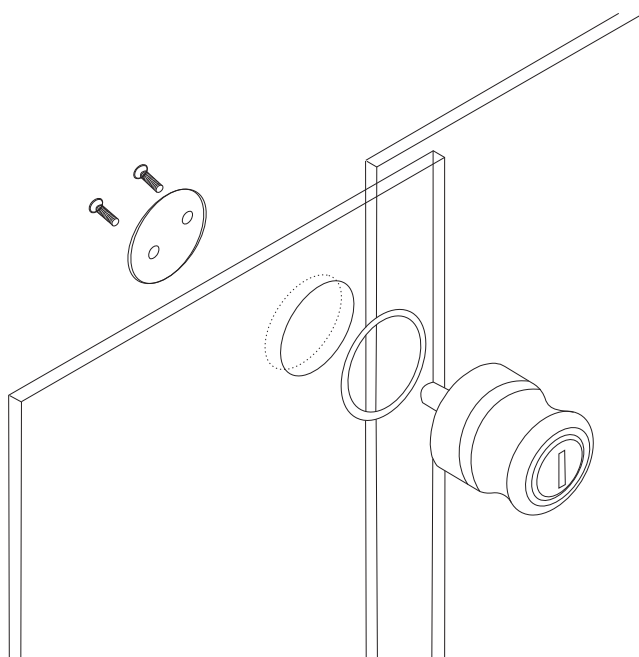
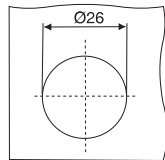
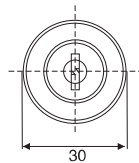
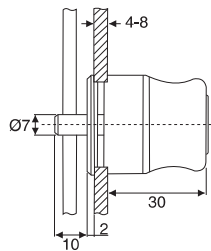
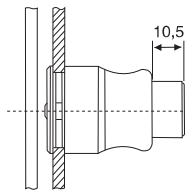
**1x Gewindeschraube M6**

Screw M6

**2x Klemmplatten aus Kunststoff**

Fixing plates in plastic





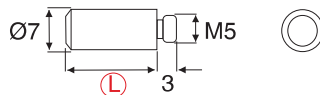
**Glasschiebetürschloss für Glasstärke von 4-8mm**

Glass sliding door lock for glass door thickness of 4-8mm freely adjustable

**Material: Zamak / Zinc alloy**

20

Oberfläche / Finish	Art. No.
Vernickelt poliert / Nickel plated polished	104 100686
Edelstahl Optik / Stainless steel finish	104 102842



**Verlängerungsstift M5 für Schiebetürschloss**

Extension pin M5 for sliding door lock

**Material: Stahl / Steel**

**Oberfläche / Finish: Vernickelt / Nickel plated**

20

L =	Art. No.
4mm	104 100889
6mm	104 102653
8mm	104 101400
10mm	104 101736
12mm	104 101211
14mm	104 102541
16mm	104 101050
18mm	104 102506
20mm	104 101610

**Beispiel / Example:**

**Berechnung der Stiftlänge / Calculation of pin length**

P = 19mm  
F = 9mm

**L = Plattenstärke (P) - 10mm + Fugenmaß (F) zwischen den beiden Schiebetüren**

L = Board thickness (P) - 10mm + gap (F) between the sliding doors

L = 19-10+9 = 18mm



**Alu - Glasschiebetürschloss**  
 Alu - Glass sliding door lock

**BMB**



**Für Aluminiumrahmen mit Glasschiebetüren, mit Schrauben 2 x M3x19mm**  
 For aluminium framed glass sliding doors, with screws 2 x M3x19mm

**Material: Zamak / Zinc alloy**

20

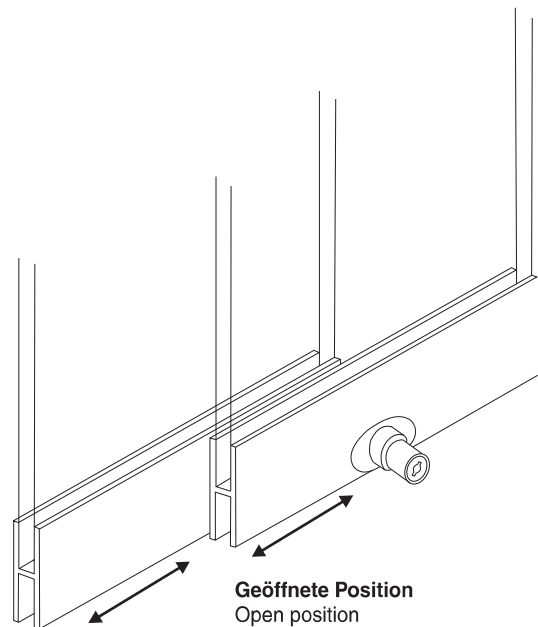
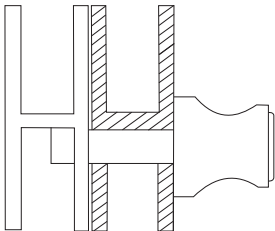
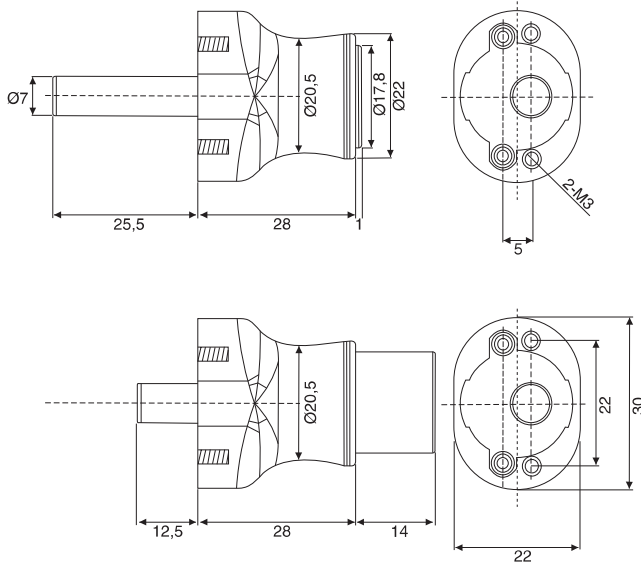
**Oberfläche / Finish**

**Art. No.**

**Chrom matt /**

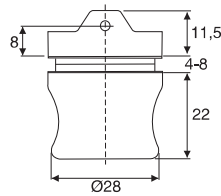
**104 100518**

**Chrome matt**



**Verlängerungsstifte M5**  
 siehe Seite 1.64  
 Extension pins M5 on  
 page 1.64

Maßangaben unverbindlich / Dimensions not binding



**Glastür-Stiftschloss für Glasstärke 4-8mm stufenlos verstellbar**  
Glass door pin lock for glass thickness of 4-8mm freely adjustable

**Material: Zamak / Zinc alloy**

**20**

**Modell A - ohne Verlängerung des Schließstiftes**

Type A - without locking pin extension

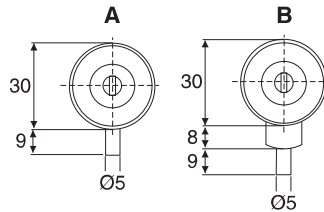
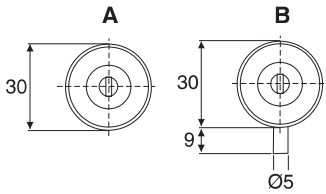
**Oberfläche / Finish** **Art. No.**

**Vernickelt poliert / Nickel plated polished** **104 100987**

**Edelstahl Optik / Stainless steel finish** **104 100595**

**Geöffnet / Open position**

**Geschlossen / Closed position**



**Modell B - mit Verlängerung des Schließstiftes**

Type B - with locking pin extension

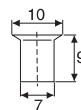
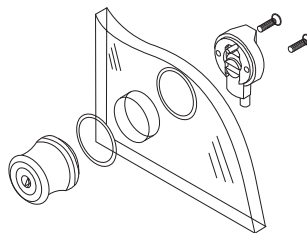
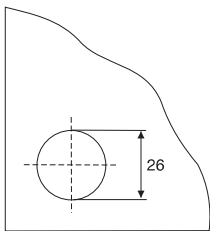
**Oberfläche / Finish** **Art. No.**

**Vernickelt poliert / Nickel plated polished** **104 101918**

**Edelstahl Optik / Stainless steel finish** **104 102380**

**Lochbild für die Glasbohrung**  
Diagram for glass drilling

**Installationsdiagramm**  
Installation diagram



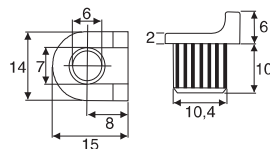
**Buchse / Socket**

**Material: Stahl / Steel**

**1 / 500**

**Oberfläche / Finish** **Ø** **Art. No.**

**Vernickelt / Nickel pl.** 7mm **404 117073**

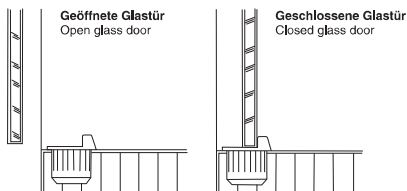


**Buchse mit Anschlag für Glastür-Stiftschloss**

Socket with stopper for glass door pin lock

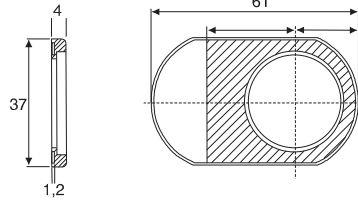
**Material: Kunststoff / Plastic**

**20**



**Oberfläche / Finish** **Art. No.**

**Schwarz / Black** **104 102051**



**Anschlagplatte für Glastür-Stiftschloss**

(Seite 1.63), Glasstärke 4-6mm\*  
Stop plate for glass door pin lock (page 1.63),  
for glass thickness 4-6mm\*

**Material: Zamak / Zinc alloy**

**20**

**Oberfläche / Finish**

**Art. No.**

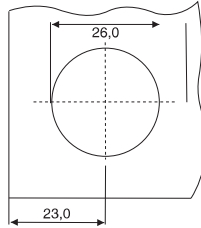
**Edelstahl Optik /**

**104 101785**

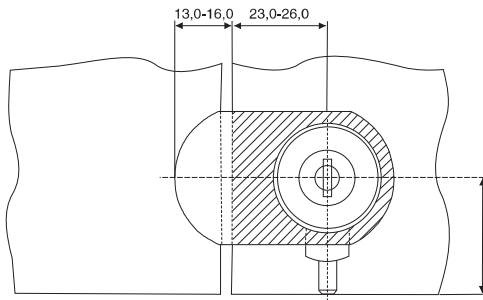
**Stainless steel finish**

\* Für Glas ab 7mm Stärke bitte Extraschrauben  
bestellen

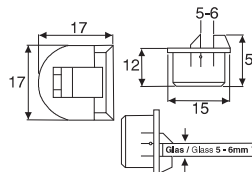
For glass of 7mm thickness or more please order extra  
screws



**Bohrtable für Doppeltüranschlag**  
Drilling template for double door application



**Doppeltüranschlag**  
Double door application



**Türstopper mit Zuhaltung für Glastüren  
von 5-6mm Stärke**

Door stopper with closing for glass doors  
with 5-6mm thickness

**Material: Kunststoff / Plastic**

**20**

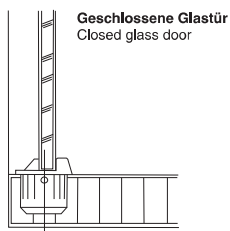
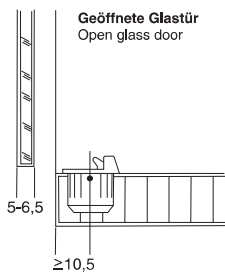
**Oberfläche / Finish**

**Art. No.**

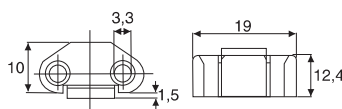
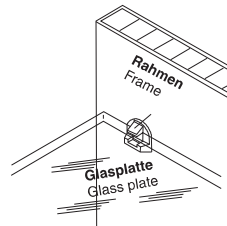
**Schwarz / Black**

**104 101505**

**Einbau / Installation**



Extra:  
**Türstopper montiert als Glasbodenträger**  
Door stopper mounted as glass shelf support



**Türstopper für Glastüren, ohne Zuhaltung**

Door stopper for glass doors, without closing

**Material: Kunststoff / Plastic**

**20**

**Art. No.**

**Schwarz / Black**

**104 101302**



**Anschlagplatte für Doppeltüren aus Glas**  
 Stop plate for double glass doors

**Anschlagplatte zur Verwendung mit Hebelschlössern**

Stop plate in combination with lever locks

**Material: Zamak / Zinc alloy**

20

**Oberfläche / Finish**

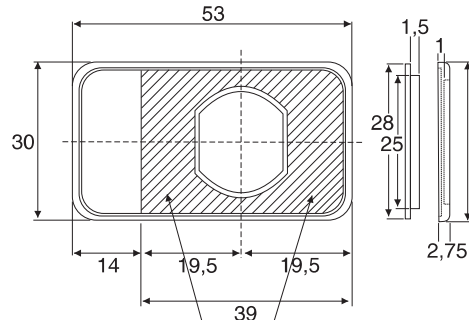
**Art. No.**

**Vernickelt matt**

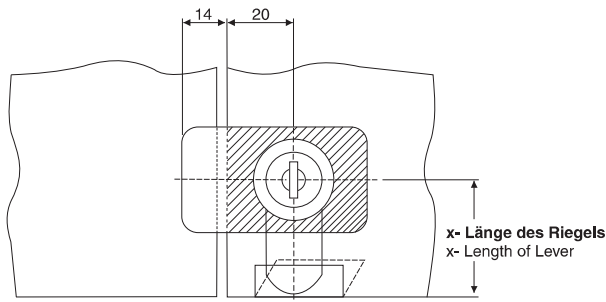
**104 101645**

Nickel plated matt

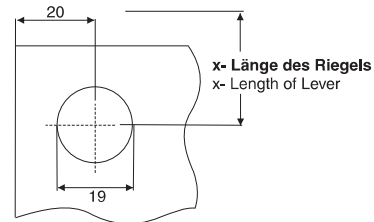
Verwendbar mit Hebelschloss  
 siehe Seite 1.39  
 Useable with lever lock  
 on page 1.39



**Doppelseitig klebend**  
 Double sided adhesive

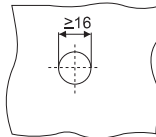
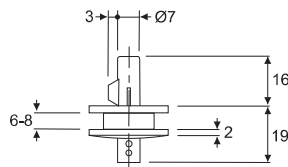


**Doppeltüranschlag**  
 Double door application



**Bohrtabelle für Doppeltüranschlag**  
 Drilling template for double door application





**Steckzylinderschloss für Glasschiebetüren von 6-8mm, mit 2 Schlüsseln**

Glass door pin lock for sliding glass doors of thickness 6-8mm, with 2 keys

**75 verschiedene Schließungen möglich**  
 75 different key changes available

**Material: Schlüssel: Stahl / Key: Steel**  
**Schloss: Messing / Lock: Brass**

**Oberfläche: Verchromt**  
 Finish: Chrome plated

**20**

**Art. No.**

**Gleichschl.**  
 Keyed alike **119 103780**

**Verschiedenschl.**  
 Keys to differ **119 103780**

**Rosette für Steckzylinderschloss /**  
 Rosette for glass door pin lock

**Material: Zamak / Zinc alloy**

**20**

**Oberfläche / Finish** **Art. No.**

**Verchromt poliert / Chrome pol.** **119 103983**

**Matt verchromt / Matt chrome** **119 104130**

**PVC-Distanzscheibe für Steckzylinderschloss, bei Glasstärke unter 6mm**

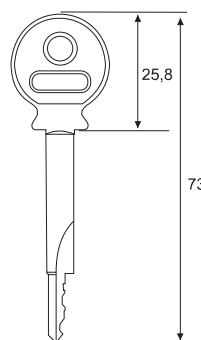
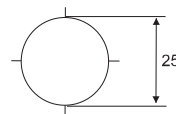
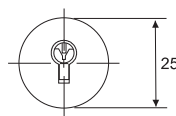
Additional plastic spacer for pin lock, for glass thickness less than 6mm

**Material: PVC**

**20**

**Materialstärke / Thickness** **Art. No.**

**0,5mm** **119 103836**



**Steckzylinderschloss für Glasschiebetüren von 6-8mm, mit 2 Schlüsseln, Rosette und 2 PVC Distanzscheiben**

Glass door pin lock for sliding glass doors of thickness 6-8mm, with 2 keys, rosette and 2 PVC washer

**Material: Schlüssel: Stahl / Key: Steel**  
**Schloss: Messing / Lock: Brass**  
**Rosette: Zamak / Zinc alloy**

**Oberfläche der Rosette: Verchromt**  
 Finish of the rosette: Chrome plated

**20**

**Gleichschl.**  
 Keyed alike **Art. No.**

**001** **119 104242**

**002** **119 103990**

**Verschiedenschl.**  
 Keys to differ **119 103787**

Weitere Gleichschließungen auf Anfrage / Further keyed alike upon request

