

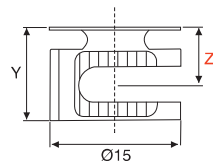
## Modulfix Exzenter 15mm

Modulfix connectors 15mm

# BMB



Vernickelt  
Nickel plated



Plattenstärke = **Z** x 2  
Board thickness = **Z** x 2

**Modulfix 15 Exzenter ohne Abdeckrand**  
Modulfix 15 connector without cover  
flange

**Werkzeugaufnahme / Tool fitting: SW4,  
PZ2**

**Material: Zamak / Zinc alloy**



Blank  
Blanc

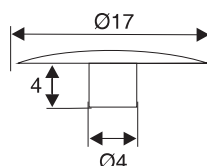
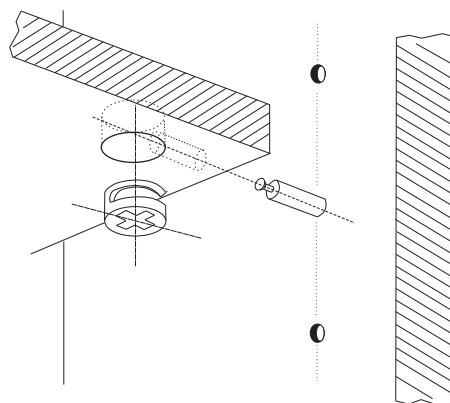
1000

Maß <b>Z</b> Size <b>Z</b>	Maß <b>Y</b> Size <b>Y</b>	<b>BT*</b>	Blank Blank	Vernickelt Nickel pl.
6,0mm	10,3mm	10,5mm	-	<b>402 114042</b>
6,5mm	10,8mm	11,0mm	-	<b>402 115428</b>
7,5mm	11,7mm	11,9mm	-	<b>402 115589</b>
8,0mm	12,2mm	12,4mm	<b>402 114959</b>	<b>402 114497</b>
9,0mm	13,0mm	13,2mm	<b>402 112565</b>	<b>402 112740</b>
9,5mm	13,5mm	13,7mm	<b>402 113769</b>	<b>402 114182</b>
11,5mm	15,7mm	16,0mm	-	<b>402 114070</b>
14,5mm	18,7mm	19,0mm	<b>402 113440</b>	<b>402 112768</b>

**\*BT = Bohrtiefe / Drilling depth**

**Weitere Oberflächen (z.B. Collinox oder Verzinkt) auf Anfrage lieferbar**  
Further finishes (i.e. Collinox or zinc plated) available upon request

Mit Richtungspfeil als  
Montageerleichterung  
Closure direction for  
easy assembly



**Abdeckkappe für Ø 12mm + 15mm**  
Cover cap for Ø 12mm + 15mm

**Material: Kunststoff / Plastic**

Oberfläche / Finish	200	1000
<b>Weiß / White</b>	<b>402 112894</b>	<b>402 115652</b>
<b>Beige / Beige</b>	-	<b>402 114056</b>
<b>Schwarz / Black</b>	<b>402 115869</b>	<b>402 114161</b>
<b>Braun / Brown</b>	-	<b>402 114630</b>
<b>Grau / Grey</b>	-	<b>402 114910</b>



Braun / Brown



Schwarz / Black



Grau / Grey

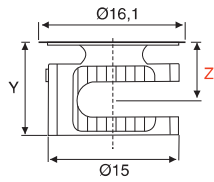


Weiß / White



Beige / Beige

Maßangaben unverbindlich / Dimensions not binding



**Plattenstärke = Z x 2**  
Board thickness = Z x 2

**Modulfix 15 Exzenter mit Abdeckrand**  
Modulfix 15 connector with cover flange

**Werkzeugaufnahme / Tool fitting: SW4, PZ2**

**Material: Zamak / Zinc alloy**

**200\***

\* Auch in VE 1000 Stück lieferbar /  
Also available in VE 1000 pcs

**Weitere Oberflächen**  
(z.B. Collinox oder Ver-  
zinkt) auf Anfrage  
**lieferbar**  
Further finishes  
(i.e. Collinox or zinc plated)  
available upon request

**Mit Richtungspfeil als**  
**Montageerleichterung**  
Closure direction for  
easy assembly



			<b>Art. No.</b>
<b>Maß Z</b>	<b>Maß Y</b>	<b>BT*</b>	<b>Vernickelt</b>
Size Z	Size Y		Nickel pl.
9,0mm	13,0mm	13,2mm	<b>402 115827</b>
9,5mm	13,5mm	13,7mm	<b>402 114679</b>

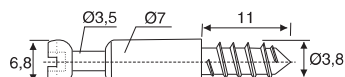
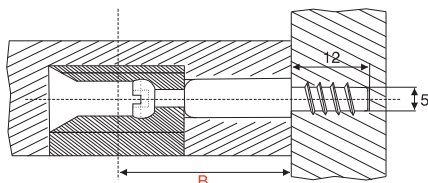
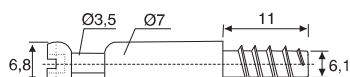
\*BT = Bohrtiefe / Drilling depth

**Oberfläche Blank auf Anfrage lieferbar** / Finish Blank available upon request.

## Modulfix Bolzen 5mm, 3mm

Modulfix bolts 5mm, 3mm

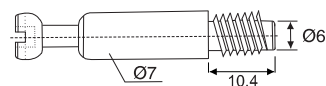
# BMB



Auf Anfrage erhältlich / Available upon request:

**Doppelgang-Gewinde: für leichteres und schnelleres Eindrehen**

Double thread: for quicker and easier fastening



**Werkzeugaufnahme: Kreuzschlitz**

Tool fitting: Cross slot

**Werkzeugaufnahme / Tool fitting: SW4, PZ2**

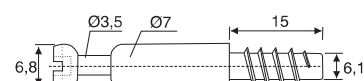
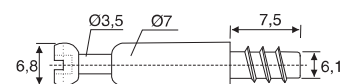
**Material: Stahl / Steel**

Maß B Size B	Bohrloch Bore hole		Art. No.	
			Blank Blank	Verzinkt Zinc pl.
24mm	5mm	2500	402 114875	402 114847
34mm	5mm	2000	402 113615	402 114945
24mm	5mm	200	-	402 113902
34mm	5mm	200	-	402 112971

**Hinweis: Andere Gewindelängen auf Anfrage**

**lieferbar**

Remarks: Other thread lengths available upon request



**Stahlbolzen RUNNER**

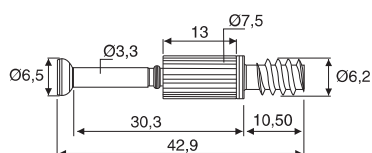
Steel bolt RUNNER

**Werkzeugaufnahme / Tool fitting:**

**Kreuzschlitz / Cross slot**

**2000**

**Oberfläche / Finish: Verzinkt / Zinc plated**



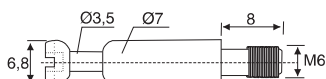
**Cr6 frei**  
Cr6 free

**Länge / Length**

**Art. No.**

**34mm**

**402 112327**



**Stahlbolzen**  
Steel bolt

**Werkzeugaufnahme: Kreuzschlitz**  
Tool fitting: Cross slot

**Gewinde / Thread: M6**

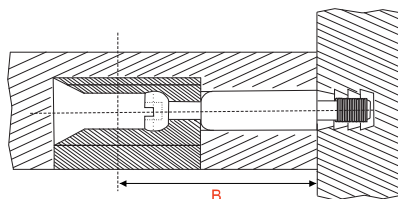
**Art. No.**

Maß B		Blank	Verzinkt
Size B		Blank	Zinc pl.
24mm	2500	-	<b>402 112873</b>
34mm	2000	<b>402 114770</b>	<b>402 113951</b>

**Ebenfalls lieferbar**  
Available upon request:

**Bolzen mit Kugel in Kombination mit Spreizmuffe**

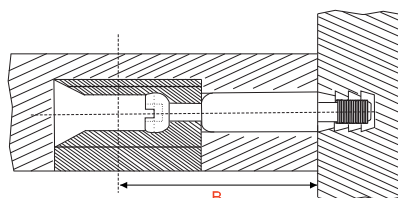
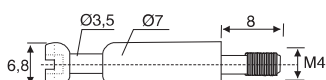
Bolt with ball to be used in combination with spreading dowel



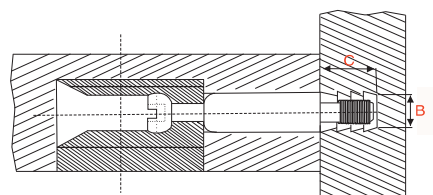
**Gewinde / Thread: M4**

**Art. No.**

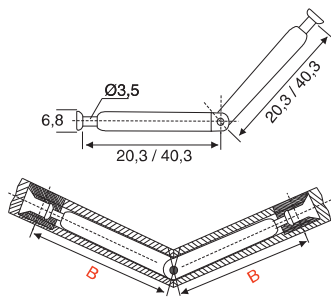
Maß B		Blank	Verzinkt
Size B		Blank	Zinc pl.
24mm	2500	<b>402 112747</b>	<b>402 115421</b>
34mm	2000	<b>402 114896</b>	<b>402 114238</b>



**C = Bohrtiefe, abhängig von eingesetzter Muffe**  
/ Bore hole distance, in accordance with used dowel




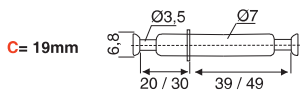
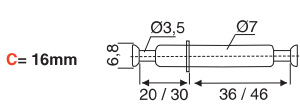
**B = Bohrmaß / Bore hole distance**



Gehrungsverbinder mit Zwillingsanschlag  
Mitre joint connector


Material: Stahl / Steel

		Art. No.
Maß B		Verzinkt
Size B		Zinc pl.
44mm	1000	402 113104

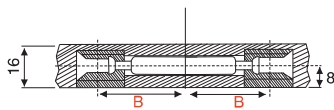
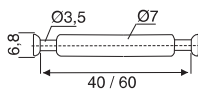
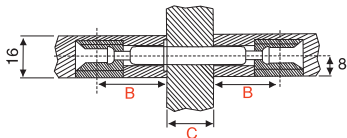


Doppelbolzen mit Ring  
Double bolt with ring

Material: Stahl / Steel


			Art. No.	
Maß B	Maß C		Blank	Verzinkt
Size B	Size C		Blank	Zinc pl.
34mm	16mm	1000	-	402 114392
34mm	19mm	1000	402 115211	-

C = Plattenstärke / Board thickness



Doppelbolzen ohne Ring  
Double bolt without ring

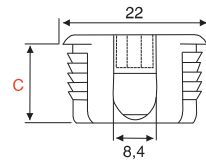
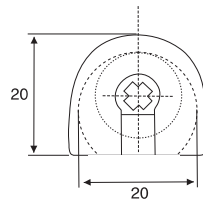
Material: Stahl / Steel

		Art. No.
Maß B		Blank
Size B		Blank
24mm	1000	402 115512
34mm	1000	402 115344

Andere Längen auf Anfrage  
Other lengths upon request



**Großer Rundausschnitt**  
Large opening



**Modulfix 20**  
Connector 20

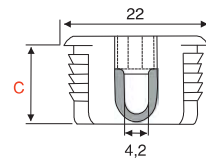
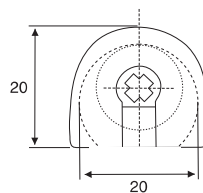
**Werkzeugaufnahme**  
Tool fitting: **PZ2**

**Material:** Zamak / Zinc alloy

Plattenstärke Board thickness	Maß C Size C		Art. No.	
			Vernickelt Nickel pl.	
15/16mm	12,5mm	250	402 113776	
18/19mm	14,0mm	250	402 115463	

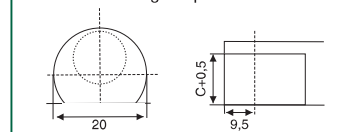


**V-Ausschnitt**  
V-Type

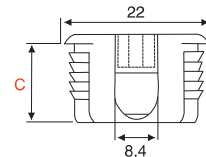
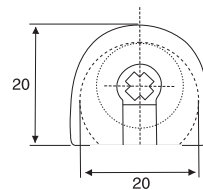


Plattenstärke Board thickness	Maß C Size C		Art. No.	
			Vernickelt Nickel pl.	
15/16mm	12,5mm	250	402 112964	
18/19mm	14,0mm	250	402 115603	

**Bohrbild / Drilling template:**



**Großer Rundausschnitt**  
Large opening



**Modulfix 20**  
Connector 20

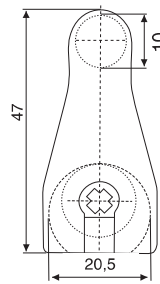
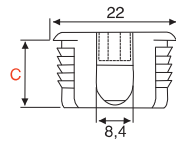
**Werkzeugaufnahme**  
Tool fitting: **PZ2**

**Material:** Kunststoff und Zamak  
Plastic and zinc alloy

Oberfläche Finish		Art. No.	
		Plattenstärke / Board thickness 15/16mm	18/19mm
Weiß / White	500	402 114546	402 114651
Schwarz / Black	500	402 113888	402 112992
Braun / Brown	500	402 113097	402 115694
Maß C / Size C		12,5mm	14,0mm



**Großer Rundausschnitt**  
Large opening



**Modulfix 32**  
Connector 32

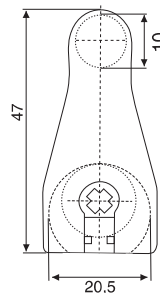
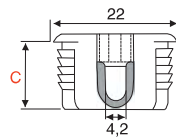
**Werkzeugaufnahme**  
Tool fitting: **PZ2**

**Material:** Zamak / Zinc alloy

		Art. No.	
Plattenstärke	Maß C	Vernickelt Nickel pl.	
Board thickness	Size C		
15/16mm	12,5mm	250	<b>402 114168</b>
18/19mm	14,0mm	250	<b>402 113314</b>

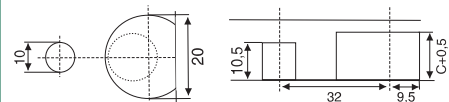


**V-Ausschnitt**  
V-Type



		Art. No.	
Plattenstärke	Maß C	Vernickelt Nickel pl.	
Board thickness	Size C		
15/16mm	12,5mm	250	<b>402 114749</b>
18/19mm	14,0mm	250	<b>302 113363</b>

**Bohrbild / Drilling template:**



**Modulfix 32**  
Connector 32

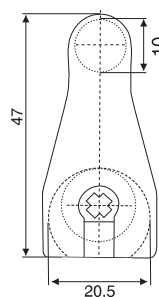
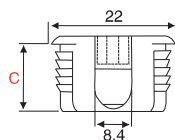
**Werkzeugaufnahme**  
Tool fitting: **PZ2**

**Material:** Kunststoff und Zamak  
Plastic and zinc alloy

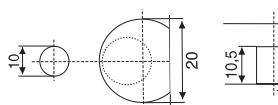
		Art. No.	
Oberfläche	Finish	Plattenstärke	
Finish		Board thickness	
Weiß / White	500	15/16mm	<b>402 113923</b>
Braun / Brown	500		<b>402 114441</b>
Maß C / Size C		12,5mm	



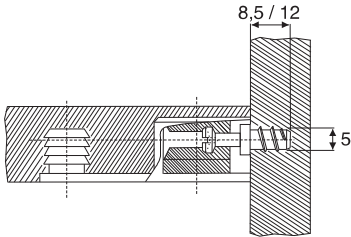
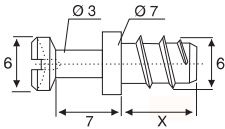
**Großer Rundausschnitt**  
Large opening



**Bohrbild / Drilling template:**





**Bolzen für Gehäuse Modulfix 20, Modulfix 25, Modulfix 32mm**  
 Bolts for housing Modulfix 20, Modulfix 25, Modulfix 32mm

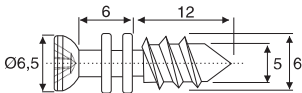


**Stahlbolzen 5mm / Steel bolt 5mm**

**Werkzeugaufnahme / Tool fitting:**  
**Kreuzschlitz / Cross slot**

		Art. No.
Oberfläche / Finish		X=11mm
Blank / Blank	1000	402 115519
Verzinkt / Zinc plated	1000	402 114266
Verzinkt / Zinc plated	200	402 115743

		Art. No.
Oberfläche / Finish		X=7,5mm
Verzinkt / Zinc plated	1000	402 113321
Verzinkt / Zinc plated	200	402 115596



**Stahlbolzen / Steel bolts**

**Werkzeugaufnahme / Tool fitting:**  
**Kreuzschlitz / Cross slot**

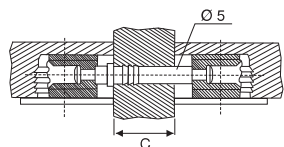
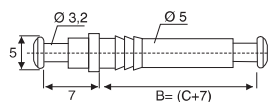
 **1000**

Oberfläche / Finish	Art. No.
Verzinkt / Zinc plated	402 113524

# Bolzen für Gehäuse Modulfix 20, Modulfix 25, Modulfix 32mm

## Bolts for housing Modulfix 20, Modulfix 25, Modulfix 32mm

**BMB**



### Mittelwandbolzen zum Einschlagen

Mitre connector, knock-in type

**Material:** Stahl, blank / Steel, blank

1000

### Plattenstärke C

Board thickness C

**Art. No.**

19mm

**402 113622**

### Stahlbolzen 3mm / Steel bolt 3mm

**Werkzeugaufnahme / Tool fitting:**

Kreuzschlitz / Cross slot

1000

### Ausführung / Type

**Art. No.**

Gepresst / Cold pressed

**402 115085**

### Stahlbolzen M4/M6 / Steel bolts M4/M6

**Werkzeugaufnahme / Tool fitting:**

Kreuzschlitz / Cross slot

### Oberfläche / Finish



**Art. No.**

Blank / Blank

1000

**402 114378**

Verzinkt / Zinc plated

1000

**402 113846**

Kunststoff Muffe M4  
Plastic dowel M4

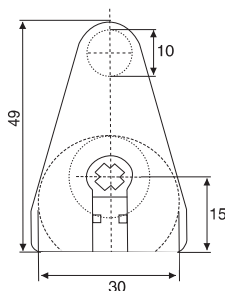
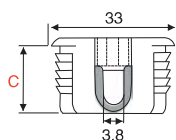
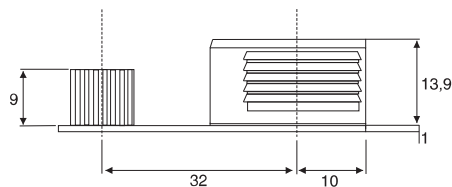
### Oberfläche / Finish

**Art. No.**

Verzinkt / Zinc plated

**402 112936**

Kunststoff Muffe M6  
Plastic dowel M6



**Modulfix 30 / Connector 30**

**Werkzeugaufnahme / Tool fitting: PZ2**

**Oberfläche / Finish: Vernickelt / Nickel plated**

**Material: Zamak / Zinc alloy**

**250**

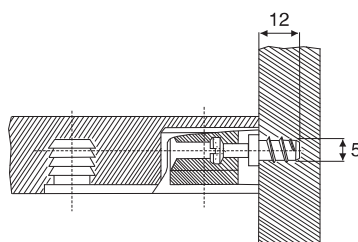
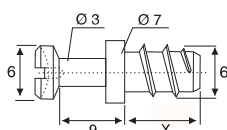
**V-Ausschnitt / V-Type**

Plattenstärke Board	Maß C Size C	Art. No.
15/16mm	12,5mm	<b>402 113930</b>
18/19mm	14,0mm	<b>402 114021</b>



**Dient der Vormontage von Korpusseiten.**  
**Fachböden und Zwischenböden können**  
**nur von oben eingesetzt werden.**

Mounting has to be done top / bottom -  
provides pre-fixation of decrease.



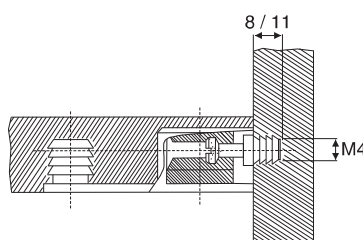
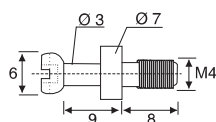
**Modulfix Bolzen für 30mm**

Modulfix bolts for 30mm

**Stahlbolzen 5mm / Steel bolt 5mm**

**Werkzeugaufnahme / Tool fitting:**  
**Kreuzschlitz / Cross slot**

Oberfläche / Finish		Art. No. X=11mm
Blank / Blank	<b>200</b>	<b>402 114742</b>

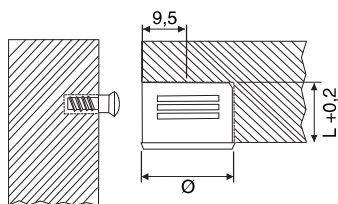
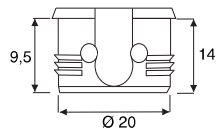
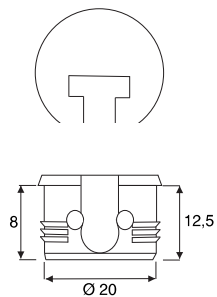


**Stahlbolzen / Steel bolt**

**Werkzeugaufnahme / Tool fitting:**  
**Kreuzschlitz / Cross slot**

Oberfläche / Finish		Art. No. M4
Blank / Blank	<b>1000</b>	<b>402 114098</b>
Blank / Blank	<b>200</b>	<b>402 115274</b>





**Modulfix 20-R**  
Connector 20-R

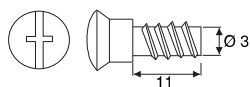
**Material:** Kunststoff / Plastic

**Plattenstärke / Board thickness:** 16mm

Oberfläche / Finish		Art. No.
Weiß / White	250	<b>402 115407</b>

**Plattenstärke / Board thickness:** 19mm

Oberfläche / Finish		Art. No.
Braun RAL 8017 / Brown RAL 8017	250	<b>402 112838</b>



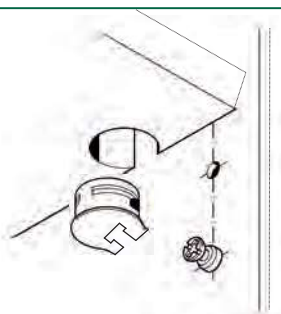
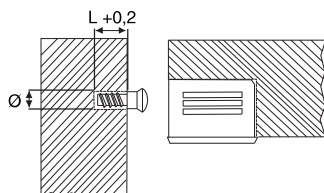
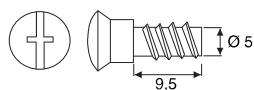
**Stahlbolzen mit Eurogewinde**  
Steel bolt with Euro-thread

**Material:** Stahl verzinkt / Steel zinc plated

250

**Bohrloch / Bore hole** **Art. No.**

Ø 3mm	<b>402 112929</b>
Ø 5mm	<b>402 114616</b>



**Geeignet für den Anschlag von Tablaren /**  
Ideal for shelving

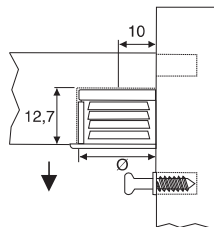
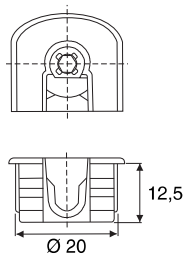
**Modulfix 20-R wird einfach in den Fachboden eingepresst**  
**und auf den Stahlbolzen aufgeschoben /**  
Modulfix 20-R is pressed into the shelf and pushed onto a  
steel bolt

**Schnelle und einfache Montage /** Fast and easy installation

**Für zwei Plattenstärken - 16mm und 19mm /**  
For Board thickness - 16mm and 19mm



**V-Ausschnitt**  
V-Type



**Modulfix 20-R Gehäuse**

Connector 20-R housing

**Werkzeugaufnahme / Tool fitting: PZ2**

**Material: KS, Zamak / Plastic, Zinc alloy**

**Plattenstärke / Board thickness: 16mm**

**Oberfläche / Finish**



**Art. No.**

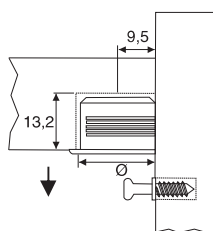
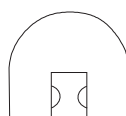
**Weiß / White**

250

**402 114868**



**V-Ausschnitt**  
V-Type



**Modulfix 20-R Gehäuse**

Connector 20-R housing

**Material: Kunststoff / Plastic**

**Plattenstärke / Board thickness: 16mm**

**Oberfläche / Finish**



**Art. No.**

**Weiß / White**

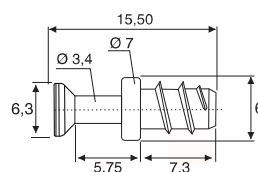
250

**402 115015**

**Schwarz / Black**

250

**402 115176**



**Zamakbolzen / Zinc alloy bolt**

**Werkzeugaufnahme / Tool fitting:**

**Kreuzschlitz / Cross slot**

**1000**

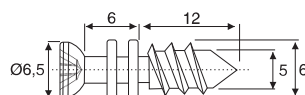
**Art. No.**

**Oberfläche / Finish**

**7,5mm**

**Blank / Blank**

**402 113699**



**Stahlbolzen / Steel bolt**

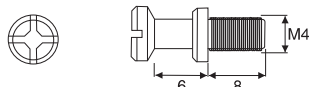
**Art. No.**

**Oberfläche / Finish**

**12mm**

**Verzinkt / Zinc plated**

**402 113524**



**Stahlbolzen mit M4 Gewinde /**

**Steel bolt with M4 thread**

**Werkzeugaufnahme / Tool fitting:**

**Kreuzschlitz / Cross slot**

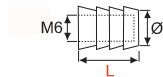
**1000**

**Oberfläche / Finish**


**Art. No.**

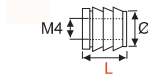
**Verzinkt / Zinc plated**

**402 114126**

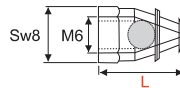



**Kunststoff Muffe**  
Kunststoff dowel

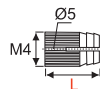
L=	Ø	Gewinde / Thread		Art. No.
11mm	8mm	M6	1000	<b>402 114700</b>
11mm	10mm	M6	1000	<b>402 113762</b>
13mm	10mm	M6	1000	<b>402 113587</b>
8mm	8mm	M4	1000	<b>402 114917</b>
8mm	8mm	M4	200	<b>402 114399</b>



**Messing Spreizmuffe**  
Brass spreading dowel



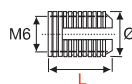
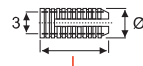
Spreizkugel Gewinde				
Ø	Nylon ball	Thread		Art. No.
8mm	+	M6	1000	<b>402 113720</b>
8mm	+	M6	1000	<b>402 114336</b>
8mm	-	M6	1000	<b>402 115470</b>
6mm	-	M4	1000	<b>402 113125</b>
6mm	-	M4	200	<b>402 112845</b>



**Nylon Spreizmuffe**  
Nylon spreading dowel

 1000

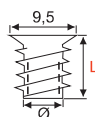
L=	Ø	Gewinde / Thread	Art. No.
9mm	5mm	3mm	<b>402 112684</b>




**Eindrehmuffe aus Zamak, verzinkt**  
Screw-in dowel, Zinc alloy, zinc plated

 1000

L=	Ø	Gewinde / Thread	Art. No.
10mm	8mm	M6	<b>402 113454</b>
13mm	8mm	M6	<b>402 114826</b>
20mm	8mm	M6	<b>402 114588</b>

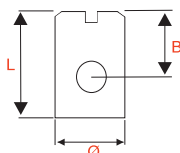


**Gewindehülse mit M4 Innengewinde, verzinkt**  
Sleeve with M4 internal thread, zinc plated

 1000

L=	Ø	Gewinde / Thread	Art. No.
15mm	5mm	M4	<b>402 112999</b>
18mm	5mm	M4	<b>402 115736</b>
22mm	5mm	M4	<b>402 112691</b>
30mm	5mm	M4	<b>402 115379</b>





### Quer Muttergewindebolzen M6

Cross dowel M6

**Material: Stahl, verzinkt**

Steel, zinc plated

**2500**

**Ø x L x B**

**Art. No.**

10 x 14 x 9mm

**402 115701**

**Andere Abmessungen auf Anfrage lieferbar**

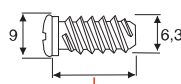
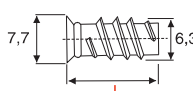
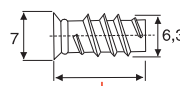
Other dimensions available upon request



**Alternativ lieferbar**  
Alternatively available:



**Doppelganggewinde**  
Double thread



### Euroschraube für 5mm Bohrloch

Euro screw for 5mm bore hole

**Material: Stahl, verzinkt**

Steel, zinc plated

**1000**

**Art. No.**

**Kopf Ø**

Head Ø

**11mm**

**L =**

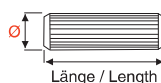
**13mm**

**16mm**

7mm **402 115035** **402 113531** **402 114560**

7,7mm **402 113545** **402 115302** **402 115505**

9mm **402 114364** **402 114693** **402 115246**



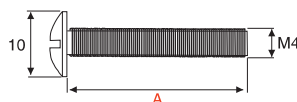
### Buchenriffeldübel

Beech dowel

**Material: Buche / Beech**

**10 kg**

Ø	Länge / Length	Art. No.
6mm	30mm	<b>402 113489</b>
8mm	30mm	<b>402 113426</b>
8mm	35mm	<b>402 114049</b>
8mm	40mm	<b>402 114889</b>
8mm	60mm	<b>402 115372</b>
10mm	40mm	<b>402 115351</b>
10mm	60mm	<b>402 114658</b>



### Möbelgriffschraube mit M4 Gewinde

Furniture handle screw with M4 thread

**Werkzeugaufnahme: Kreuzschlitz, PZ2**

Tool fitting: Cross slot, PZ2

**Material: Stahl, verzinkt**

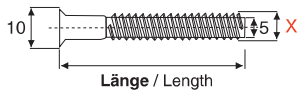
Steel, zinc plated

Maß A / Size A		Art. No.
8mm	<b>50</b>	<b>402 114924</b>
12mm	<b>50</b>	<b>402 115092</b>
20mm	<b>50</b>	<b>402 115225</b>

Maß A / Size A		Art. No.
22mm	<b>100</b>	<b>402 113790</b>
23mm	<b>100</b>	<b>402 113671</b>
24mm	<b>100</b>	<b>402 114553</b>
25mm	<b>100</b>	<b>402 113797</b>
26mm	<b>100</b>	<b>402 114259</b>

Maß A / Size A		Art. No.
30mm	<b>100</b>	<b>402 114525</b>
45mm	<b>100</b>	<b>402 113188</b>
40mm	<b>100</b>	<b>402 112614</b>
55mm	<b>100</b>	<b>402 112635</b>
50mm	<b>100</b>	<b>402 113965</b>

Auch in VE 1000 Stück lieferbar / Also available in VE 1000 pcs



**Solofix - Einteilverbinder**  
Solofix - One piece connector

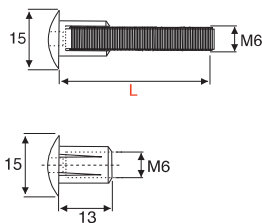
**Material:** Stahl / Steel

**Oberfläche:** Verzinkt  
Finish: Zinc plated

1000

PZ-Kreuzschlitz 3  
mit Kopfbohrung

Länge / Length	Art. No.	
	X = 6,3mm	X = 7mm
50mm	402 112810	402 112600
70mm	-	402 113237

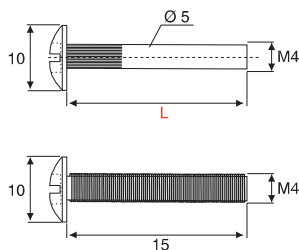


**Verbindungsschraube mit M6 Gewinde**  
Connecting screw with M6 thread

**Material:** Stahl verzinkt, Kunststoff  
Steel zinc plated, Plastic

500

Oberfläche Finish	Art. No.		
	L =		
	25mm	36mm	39mm
Weiss White	402 114315	402 112775	402 114903
Braun Brown	402 115449	402 114231	402 113370



**Verbindungsschraube mit M4 Gewinde  
aus Ganzmetall**

Connecting screw with M4 thread in metal

**Material:** Stahl, vernickelt  
Steel, nickel plated

Länge / Length (L)		Art. No.
28-36mm	500	402 114518
37-45mm	500	402 113328